



# Monthly Newsletter

*Welcome to June, where the lightness of Gemini and the nurturing energy of Cancer guide us toward greater understanding, meaningful connection, and spiritual renewal.*



## The Layers of the Aura

### Your Energy Field During the Shifts of June 2026

June 2026 arrives carrying powerful emotional, spiritual, and energetic movement. Many people are feeling more sensitive than usual, emotionally overwhelmed, mentally exhausted, spiritually awakened,...

[READ MORE](#)



## This Month's Benevolent Being

### Archangel Raguel

Archangel Raguel is often known as the Angel of Harmony, Fairness, Justice, and Divine Relationships. His name is commonly translated as "Friend of God," reflecting his role as ...

[READ MORE](#)

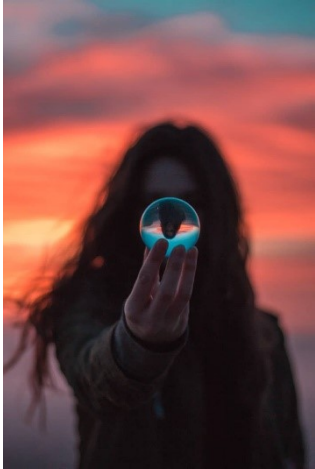


## An Astrological Overview

### Gemini and Cancer

June begins under the lively and curious influence of Gemini, bringing movement, communication, and a desire to explore new ideas and possibilities. After the steady pace of Taurus season, the energy...

[READ MORE](#)

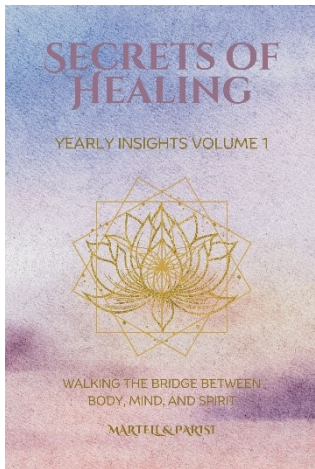


## Secrets of Healing Blog

### Stay Tuned for Upcoming Blogs

Our Blogs are great for exploring the deeper connections between the cosmos, spirituality, and personal transformation. We share our personal insights on astrology, holistic healing, and the energetic shifts that shape our lives. Whether you're seeking guidance, inspiration, or a deeper understanding of the universe's rhythm, you'll find reflections and wisdom to support your journey.

[READ MORE](#)



## Our Book

### Secrets Of Healing Yearly Insights Vol 1

A beautiful collection of monthly reflections, astrology, spiritual guidance, and holistic wisdom gathered throughout the year. Each page invites you to explore healing through body, mind, and spirit.

[Order your copy now on Amazon](#) or on [Barnes and Noble](#) and begin your journey of self-discovery and transformation! Also check with Teri if we have any in stock and on hand.



## Grand Opening

### Secrets Of Healing & Whispers of Light Healing

We are beyond excited to open our doors to a shared sacred space where transformation meets compassion, where healing is honored, and where every soul is welcome.

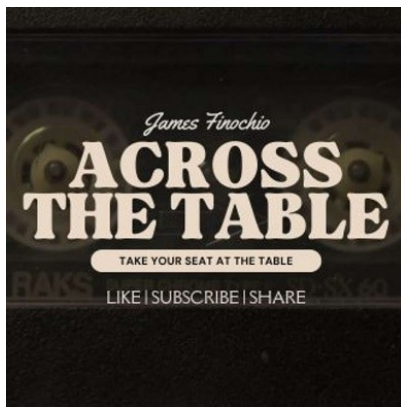
[READ MORE](#)

# SECRETS OF HEALING

## UPCOMING CLASSES AND WORKSHOPS

Please remember to check our Calendar as we Add and Update all month long.

[VIEW OUR CALENDAR](#)



### *Listen to Our Conversations on Across the Table:*

We're excited to share that we joined **James Finocchio** on the *Across the Table* podcast for two insightful conversations exploring healing, hypnosis, and the deeper workings of the mind.

These episodes offer a chance to go beyond surface-level discussions and dive into the powerful ways our thoughts, beliefs, and subconscious patterns shape our lives.



In **Episode 3: *Exploring the Depths of Healing***, Teri and I discuss our personal journeys into healing work, the spiritual and energetic dimensions of transformation, and how people can begin reconnecting with their own inner wisdom.

Later, in **Episode 22: *Hypnosis, the Subconscious Mind, and Rewiring Beliefs***, Teri returns to explore the fascinating world of hypnosis and how working with the subconscious mind can help release limiting beliefs and create lasting change.



If you're curious about healing, consciousness, or the power of the subconscious mind, these conversations offer both inspiration and practical insight.

 **Click and Listen to the episodes here:**

[Spotify](#) | [Apple Podcasts](#) | [YouTube](#) | [Buzzsprout](#) | [Podcast Collective](#) | [Podcast Addict](#) | [Amazon Music](#) | [Castbox](#) | [rephonic](#)

Thank you for reading and for being part of this journey of healing and self-discovery. Your presence in this community truly means more than you know.



GRAND  
*Opening*

A SHARED SACRED SPACE FOR  
SECRETS OF HEALING  
&  
WHISPERS OF LIGHT HEALING

TWO HEART-CENTERED PATHS.  
ONE BEAUTIFUL PURPOSE.

*Healing. Growth. Light.  
Together.*

We are beyond excited to open our doors to a shared sacred space where transformation meets compassion, where healing is honored, and where every soul is welcome.

This is more than a space...  
it's a sanctuary for the heart.

We invite you to join us as we celebrate this new beginning filled with love, light, community, and connection.



HEALING  
SESSIONS



SPIRITUAL  
GUIDANCE



WORKSHOPS &  
EVENTS



COMMUNITY &  
CONNECTION



SUPPORT FOR  
MIND, BODY  
& SOUL

*Come as you are. Leave more you.*

LET'S RISE, HEAL, AND SHINE TOGETHER.

# The Layers of the Aura

## Your Energy Field During Shifts of June 2026

By Teri Martell



See Below for Expanded Image

June 2026 arrives carrying powerful emotional, spiritual, and energetic movement. Many people are feeling more sensitive than usual, emotionally overwhelmed, mentally exhausted, spiritually awakened, or deeply reflective. Some are noticing vivid dreams, emotional triggers resurfacing, relationship changes, sudden fatigue, or an increased awareness of the energy around them. These experiences are not only emotional or physical. They are energetic.

The human aura is often described as a living field of energy surrounding the body. This field reflects our thoughts, emotions, physical health, spiritual awareness, and energetic interactions with the world around us. Every conversation, environment, relationship, and experience leaves an energetic imprint upon us. When our aura becomes weakened, overloaded, or strained, we may feel drained, anxious, disconnected, emotionally reactive, or spiritually exhausted.

Understanding the seven layers of the aura can help us recognize where we may be carrying emotional heaviness, mental stress, energetic attachments, or spiritual fatigue during times of collective change and transformation.

Have you ever felt exhausted after spending time with certain people? Walked into a room and immediately sensed tension? Suddenly felt anxious without understanding why? Needed time alone after being in a crowded environment? These experiences are often described as energetic reactions occurring within the aura.

June's energy may heighten this sensitivity, making aura awareness especially important during this month.

## The Earth as a Reflection of the Human Aura

One of the most fascinating ways to understand the human aura is to look at our planet itself.

Earth is surrounded by multiple protective layers that shield and sustain life. While scientists may not describe these layers as an aura, Earth possesses energetic and atmospheric fields that protect it from harmful influences coming from space. Without these layers, life as we know it could not exist.

The atmosphere helps regulate temperature and provides the air we breathe. The ozone layer absorbs much of the sun's harmful ultraviolet radiation. Beyond that, Earth's magnetosphere acts as an invisible shield, deflecting charged particles and solar winds that constantly travel through space.

In many ways, the human aura functions similarly.

Just as Earth has protective layers surrounding it, many spiritual traditions teach that human beings are surrounded by layers of energy that help process emotions, thoughts, relationships, intuition, and

spiritual awareness. While the atmosphere protects the physical Earth, the aura can be viewed as protecting and reflecting our energetic well-being.

When Earth's atmosphere becomes polluted, damaged, or disrupted, its ability to function efficiently can be affected. Likewise, when we experience prolonged stress, emotional wounds, negativity, fear, or exhaustion, our energetic field may become strained or depleted.

Just as the Earth continuously renews and restores itself through natural cycles, human beings also benefit from periods of rest, reflection, healing, and energetic renewal.

## Comparing Earth's Layers to the Human Aura

### Earth's Surface and Atmosphere

Comparable to the **Etheric Layer**

The atmosphere closest to Earth supports physical life and creates stability. It provides the air we breathe and helps create the conditions necessary for life to thrive. Similarly, the etheric layer is the energetic field closest to the body and is associated with physical vitality, grounding, and daily functioning.

**The Layer of Physical Vitality and Grounding:** The etheric layer is the energetic layer closest to the physical body. It reflects physical strength, vitality, grounding, stamina, and the body's overall energetic health. This layer is often affected first during periods of stress, exhaustion, overwork, emotional overwhelm, or lack of self-care.

**Real-Life Scenario:** A mother spends weeks caring for everyone around her while ignoring her own rest and nutrition. She notices she feels physically drained even after sleeping. Her patience becomes shorter, her body feels heavy, and she struggles to focus. Her etheric layer may be carrying the weight of prolonged stress and overgiving.

**June 2026 Connection:** This month may amplify physical exhaustion due to emotional overload, overstimulation, and collective energetic stress. Many people may feel energetically depleted even if they are functioning normally outwardly.

---

### Earth's Weather Systems

Comparable to the **Emotional Layer**

Storms, winds, clouds, and changing weather patterns constantly move through Earth's atmosphere. Some days are calm and sunny, while others bring turbulence and uncertainty. Emotions often move through us in much the same way. They are constantly shifting, changing, building, and releasing.

**The Layer of Feelings and Emotional Memory:** The emotional layer holds emotions, emotional wounds, sensitivities, and unresolved feelings. It shifts constantly depending upon emotional experiences, interactions, and internal reactions.

**Real-Life Scenario:** Someone hears criticism at work and suddenly feels far more hurt than the situation seems to warrant. The reaction connects to deeper emotional wounds from years of feeling unappreciated or unseen. The emotional layer stores these unresolved emotional imprints, which can become activated unexpectedly.

**June 2026 Connection:** June may bring unresolved emotions to the surface for healing. Relationship triggers, emotional sensitivity, and old wounds may reappear so they can finally be acknowledged and understood more deeply.

---

## **Earth's Communication Systems**

Comparable to the **Mental Layer**

Radio waves, satellites, and communication signals travel through Earth's atmosphere carrying information around the globe. Without these systems, communication would become fragmented and difficult. The mental layer functions similarly, processing information, beliefs, thoughts, perceptions, and understanding.

**The Layer of Thoughts and Belief Systems:** The mental layer reflects thought patterns, beliefs, fears, judgments, self-talk, and mental focus. This layer is strongly influenced by stress, information overload, fear-based thinking, and repetitive thought cycles.

**Real-Life Scenario:** A person constantly worries about worst-case scenarios even when nothing is wrong. They replay conversations repeatedly, overanalyze situations, and struggle to quiet their mind at night. Their mental layer may be overloaded with fear, stress, and mental overstimulation.

**June 2026 Connection:** The fast-moving energy of June may increase mental exhaustion and overstimulation, especially through collective stress, world events, social media, and emotional uncertainty.

---

## **Earth's Global Ecosystem**

Comparable to the **Astral Layer**

Everything on Earth is interconnected. Oceans influence weather patterns, forests support ecosystems, and every living thing affects something else. Relationships within nature create balance and harmony throughout the planet. The astral layer similarly reflects our connections with other people through relationships, compassion, love, and emotional bonds.

**The Layer of Relationships and Soul Connections:** The astral layer connects to love, relationships, emotional bonds, soul contracts, and energetic connections between people. This layer is deeply affected by heartbreak, attachment, forgiveness, compassion, and emotional connection.

**Real-Life Scenario:** Someone keeps thinking about an ex-partner constantly, even years later, feeling emotionally tied to them despite the relationship ending long ago. Certain songs, places, or memories still trigger strong emotional reactions. Energetic cords within the astral layer may still be active.

**June 2026 Connection:** Soul connections and karmic relationships may feel intensified this month. Some relationships may deepen emotionally while others may dissolve if they no longer align energetically.

---

## **Earth's Natural Blueprint**

Comparable to the **Etheric Template Layer**

Nature follows remarkable patterns and designs. Seasons cycle predictably, ecosystems maintain balance, and life unfolds according to natural laws. Beneath what we see exists an intricate blueprint that supports growth and evolution. The etheric template layer is often viewed as the energetic blueprint that supports healing, transformation, and spiritual growth.

**The Layer of Spiritual Structure and Healing Blueprint:** This layer holds the energetic blueprint for healing, alignment, and spiritual transformation. It is connected to life direction, purpose, and the deeper patterns shaping personal growth.

**Real-Life Scenario:** A person suddenly feels called to leave a job, change lifestyles, or pursue a more meaningful path even though it feels uncertain. They may feel an inner knowing that something in their life no longer aligns with who they are becoming.

**June 2026 Connection:** Many people may begin reevaluating their career path, relationships, personal goals, or spiritual direction during June as inner transformation continues unfolding.

---

## Earth's Magnetosphere

Comparable to the **Celestial Layer**

Earth's magnetosphere acts as an invisible shield extending far beyond the atmosphere. It protects the planet from harmful solar radiation and charged particles traveling through space. Although unseen, it plays a critical role in protecting life on Earth. Spiritually, the celestial layer is often associated with intuition, higher awareness, dreams, and connection to guidance beyond the physical world.

**The Layer of Intuition and Divine Connection:** The celestial layer connects to intuition, dreams, spiritual insight, higher consciousness, angelic awareness, and inner guidance.

**Real-Life Scenario:** Someone repeatedly receives intuitive feelings, vivid dreams, or strange synchronicities but dismisses them logically. Over time, they begin realizing their intuition was accurate all along. They start paying closer attention to signs, feelings, and inner knowing that once seemed insignificant.

**June 2026 Connection:** Many people may notice heightened intuition, stronger emotional sensitivity, vivid dreams, synchronicities, or spiritual experiences during June.

---

## Earth's Place Within the Universe

Comparable to the **Ketheric Layer**

Beyond all of Earth's protective layers lies the vastness of space itself. It reminds us that Earth exists as part of something much larger than itself. This perspective mirrors the highest layer of the aura, which many traditions associate with spiritual consciousness, divine connection, soul wisdom, and our relationship with the greater universe.

**The Layer of Divine Protection and Soul Consciousness:** The outermost layer of the aura is associated with spiritual wisdom, soul awareness, higher consciousness, and divine connection. This layer reflects our connection to something greater than ourselves.

**Real-Life Scenario:** After experiencing loss, hardship, or major life change, someone eventually reaches a deeper understanding of themselves and life itself. Though painful, the experience

awakens profound inner growth, compassion, wisdom, and spiritual awareness that permanently changes how they view the world.

**June 2026 Connection:** June supports spiritual awakening and deeper reflection. Many people are beginning to question old patterns, systems, relationships, and beliefs while seeking greater authenticity, meaning, and spiritual alignment.

## **Signs Your Aura May Be Carrying Energetic Stress**

- Feeling drained around people
- Sudden exhaustion
- Emotional overwhelm
- Difficulty focusing
- Increased anxiety
- Feeling emotionally heavy
- Frequent irritability
- Trouble sleeping
- Vivid dreams
- Feeling disconnected from yourself
- Absorbing other people's emotions
- Feeling overstimulated in crowds

## **Final Reflection**

Whether we view the aura as spiritual, symbolic, energetic, or metaphysical, the comparison to Earth reminds us that protection does not come from a single barrier. It comes from multiple layers working together in harmony.

The Earth does not rely solely on its atmosphere, ozone layer, or magnetosphere. Each layer serves a unique purpose while supporting the whole system.

Likewise, our physical vitality, emotions, thoughts, relationships, intuition, and spiritual awareness all interact continuously. When one layer becomes stressed or neglected, the effects may ripple throughout the entire system. When we nurture the whole person, body, mind, and spirit, our energy naturally becomes more resilient, balanced, and aligned.

June invites us to slow down, listen inwardly, and reconnect with our own energy more consciously. The more awareness we bring to our energetic well-being, the more balanced, intuitive, grounded, and spiritually aligned we become.

# The Seven Layers of the Aura

## The Earth

PROTECTS LIFE THROUGH MANY LAYERS

YOU ARE ENERGY. YOU ARE CONNECTED.  
YOU ARE PROTECTED.

## The Human Aura

REFLECTS LIFE THROUGH SEVEN ENERGY LAYERS



### EARTH'S SURFACE & ATMOSPHERE

Supports physical life and stability



### EARTH'S WEATHER SYSTEMS

Emotions shift and move like weather patterns



### EARTH'S COMMUNICATION SYSTEMS

Carries information around the globe



### EARTH'S GLOBAL ECOSYSTEM

Everything is interconnected and influences everything else



### EARTH'S NATURAL BLUEPRINT

Follows patterns, cycles and the laws of nature



### EARTH'S MAGNETOSPHERE

An invisible shield that protects from harmful radiation



### EARTH'S PLACE WITHIN THE UNIVERSE

Part of something much greater than ourselves



### ETHERIC LAYER

Physical vitality, grounding, stamina and daily functioning



### EMOTIONAL LAYER

Holds feelings, sensitivities and emotional memory



### MENTAL LAYER

Thoughts, beliefs, fears, self-talk and mental focus



### ASTRAL LAYER

Relationships, soul connections, love and energetic bonds



### ETHERIC TEMPLATE LAYER

Life purpose, healing blueprint and spiritual transformation



### CELESTIAL LAYER

Intuition, dreams, higher awareness and divine guidance



### KETHERIC LAYER

Divine connection, soul wisdom, higher consciousness and our connection to the Universe

*Just as Earth has layers that protect and sustain life,  
your aura has layers that protect and support your journey.*

# Archangel Raguel

## The Angel of Harmony, Justice, and Divine Order

Archangel Raguel is often known as the Angel of Harmony, Fairness, Justice, and Divine Relationships. His name is commonly translated as "Friend of God," reflecting his role as a compassionate mediator who helps restore peace, balance, and cooperation wherever conflict exists. Raguel's energy is gentle yet powerful, bringing order to situations that have become chaotic and helping individuals align with truth, integrity, and higher spiritual principles.



Many people call upon Archangel Raguel during times of disagreement, family tension, workplace conflict, legal matters, or strained relationships. Rather than taking sides, Raguel helps reveal the deeper truth within a situation, encouraging understanding, fairness, accountability, and resolution. He assists individuals in seeing beyond personal emotions so they can approach challenges with wisdom, compassion, and clarity.

Raguel's presence often becomes especially noticeable when life feels out of balance. He reminds us that harmony begins within. When our thoughts, actions, and intentions align with our highest values, our external relationships often begin to reflect that inner peace. His energy encourages us to become peacemakers, not by avoiding conflict, but by addressing it with honesty, integrity, and spiritual awareness.

## What Archangel Raguel Teaches

Archangel Raguel teaches that harmony is not the absence of conflict but the presence of balance, respect, and understanding.

His lessons include:

- Creating healthy boundaries
- Speaking truth with compassion
- Restoring peace after disagreements
- Developing fairness and integrity
- Strengthening relationships through communication
- Releasing resentment and judgment
- Living in alignment with spiritual principles
- Finding peaceful solutions to challenges
- Respecting both your needs and the needs of others
- Understanding that every relationship offers an opportunity for growth

Raguel reminds us that lasting peace is created when we act from love rather than fear, and from wisdom rather than reaction.

# Signs Archangel Raguel Is Near

Archangel Raguel often sends subtle signs when he is working in your life.

You may notice:

- Ongoing conflicts suddenly beginning to resolve
- A strong desire to restore peace within a relationship
- Repeated messages about forgiveness or compromise
- Feeling guided to have an honest conversation
- Synchronicities involving balance, justice, or fairness
- Seeing situations from a new perspective
- Feeling calmer during disagreements
- Unexpected opportunities for reconciliation
- Greater awareness of unhealthy relationship patterns
- A sense of peace after making a difficult but honest decision

Many people describe Raguel's presence as calm, reassuring, balanced, and emotionally grounding.

## Colors, Symbols, and Associations

### Colors

- Pale Blue
- Soft Aqua
- Light Green
- White
- Silver

These colors symbolize peace, healing, communication, truth, balance, and spiritual harmony.

### Symbols

- Scales of Justice
- Doves
- Circles
- Interlocking Hands
- Olive Branches
- Sacred Geometry Patterns
- Flowing Water

### Crystal Associations

- Blue Lace Agate
- Aquamarine
- Angelite
- Amazonite
- Celestite
- Clear Quartz

### Chakra Associations

- Heart Chakra
- Throat Chakra

These chakras support compassionate communication, forgiveness, emotional balance, and authentic self-expression.

## Areas of Assistance

- Relationships
- Family Dynamics
- Workplace Harmony
- Legal Matters
- Conflict Resolution
- Spiritual Ethics
- Personal Integrity
- Community Healing

## How to Work with Archangel Raguel

Working with Archangel Raguel begins with a willingness to invite peace into your heart and your relationships.

You may wish to:

- Ask Raguel to help you see a situation objectively.
- Invite his guidance before difficult conversations.
- Request assistance in resolving family or workplace conflicts.
- Meditate on areas of your life that feel out of balance.
- Journal about relationships that may need healing.
- Ask for clarity regarding fairness and integrity.
- Focus on speaking with honesty and compassion.
- Release the need to be right and seek understanding instead.

When calling upon Raguel, it is important to remain open to solutions that serve the highest good of everyone involved. Sometimes his guidance brings reconciliation, while other times it brings healthy boundaries and necessary change.

## Prayer to Archangel Raguel

Beloved Archangel Raguel,

I invite your loving presence into my life today.

Help me bring harmony where there is conflict, understanding where there is confusion, and peace where there is tension.

Guide my thoughts, words, and actions so they reflect compassion, integrity, and truth.

Help me release resentment, judgment, fear, and misunderstanding.

Strengthen my ability to communicate with kindness while honoring my own needs and boundaries.

Bring healing to my relationships and help all situations unfold according to Divine wisdom and the highest good of all involved.

May my heart remain open, my spirit remain balanced, and my path remain aligned with love.

Thank you for your guidance, protection, and support.

And so it is.

## Final Reflection

Archangel Raguel reminds us that peace is not something we find outside ourselves. It begins within our own hearts and radiates outward into every relationship, conversation, and experience we encounter.

When we choose understanding over judgment, honesty over avoidance, and compassion over fear, we create space for healing and transformation to occur. Raguel's presence encourages us to become instruments of harmony in a world that often feels divided and uncertain.

As you move through the weeks ahead, remember that every act of kindness, every moment of forgiveness, and every effort to create understanding contributes to a greater balance not only in your own life but in the collective energy of humanity.

## A Message from Archangel Raguel

*"Beloved one, seek not perfection, but harmony. Release the burdens of judgment and allow truth to guide your heart. Where there is conflict, become a source of understanding. Where there is confusion, become a source of clarity. Where there is fear, become a source of compassion.*

*Trust that Divine Order is always at work, even when circumstances appear uncertain. Stand firmly in your truth, honor your boundaries, and allow love to lead your actions.*

*Peace begins within you, and through your willingness to choose harmony, you become a light that helps bring balance to the world around you."*

~ Archangel Raguel

## The Weight We Carry Continues

—A New Chapter of Justice, Healing and Hope—



As the date of sentencing drew near, the young man found himself carrying a burden heavier than anything he had ever known. Months had passed since the accident that changed so many lives forever, yet there wasn't a single day that went by when he didn't think about it. The memories replayed constantly in his mind. Some nights he barely slept, and when he did, his dreams often

returned to the same terrible moment. He thought about the family who had lost a loved one, the pain they must still be experiencing, and the grief that would never completely disappear. He thought about his own family, who had stood beside him despite their heartbreak and fear. Most of all, he thought about the choices that had led him to this place and wished with all his heart that he could somehow go back and make different decisions.

As sentencing approached, fear began to overshadow everything else. He worried about how much time he might receive. He worried about whether the victim's family would ever find peace. He worried about whether he would ever be able to forgive himself. The future felt uncertain, and for the first time in his life, he realized there were some things he could not fix, no matter how badly he wanted to.

The evening before sentencing, he sat alone in his cell staring out the small window. The sky beyond had begun to darken, and a gentle rain tapped against the glass. The world outside seemed to continue moving forward while his own life felt suspended in place. Exhausted from carrying months of guilt, fear, and uncertainty, he quietly bowed his head and offered a prayer.

He did not pray for freedom. He did not pray for a miracle. Instead, he prayed for fairness. He prayed for the victim's family. He prayed for his own family. He prayed that somehow healing could eventually emerge from so much pain. When his prayer was finished, a strange sense of calm settled over him, and before long he drifted into sleep.

That night he found himself standing in a beautiful valley unlike anything he had ever seen. The air felt peaceful and still. A crystal-clear river wound through the landscape, reflecting the light of countless stars overhead. Everything seemed perfectly balanced, as if nature itself existed in complete harmony.

As he looked around, he noticed a figure approaching in the distance. The being was surrounded by soft silver and pale blue light that seemed to shimmer with every step. Large wings stretched behind him, and in his hands he carried a set of radiant scales. Although the young man had never seen him before, something deep within him recognized the presence immediately.

It was Archangel Raguel.

As the angel approached, the young man expected judgment. Instead, he felt an overwhelming sense of compassion. Raguel's presence carried a peace unlike anything he had experienced in months. It was not the peace of forgetting what had happened, nor the peace of escaping consequences. It was a deeper peace, one that seemed to exist beneath the surface of every fear and every regret.

Without speaking, Raguel gently motioned toward the scales he carried. One side of the scales immediately became heavy with images from the accident. The young man saw grief, loss, heartbreak, and pain. The weight seemed almost unbearable. He watched as the scales tipped dramatically under the burden.

Then something remarkable happened.

On the opposite side of the scales began to appear other images. He saw accountability. He saw remorse. He saw lessons learned through suffering. He saw future opportunities to help others avoid similar mistakes. He saw compassion emerging from tragedy. He saw lives touched by kindness, understanding, and growth. Slowly, the scales began moving back toward balance.

The young man stared in amazement. He had spent months believing that his life would forever be defined by a single moment. Yet what he saw before him suggested something different. While the past could never be changed, the future had not yet been written.

Raguel then showed him something even more profound. He saw the victim's family carrying grief, but he also saw moments of love, support, and healing that would gradually help them move forward. He saw his own family struggling with fear, yet finding strength through their love for one another. He saw friends, counselors, first responders, and community members whose lives had also been affected. Every person carried pain. Every person carried burdens unseen by others.

In that moment, the young man realized that tragedy creates ripples that extend far beyond what we can see. Yet healing also creates ripples. Compassion creates ripples. Forgiveness creates ripples. Every choice made after tragedy has the potential to influence countless lives.

Raguel's message became clear. Divine justice was not about revenge. It was not about condemning a person forever because of the worst mistake they had ever made. Divine justice acknowledged the pain that had occurred while still allowing room for growth, responsibility, and transformation. True justice sought balance. It honored both accountability and mercy.

As the dream continued, the young man felt some of the heaviness he had been carrying begin to lift. The guilt remained, but it no longer felt hopeless. The fear remained, but it no longer controlled him. For the first time, he understood that accepting responsibility did not mean abandoning all hope for the future.

When morning arrived, he awoke with a sense of peace he had not felt in many months. Nothing about his situation had changed. The sentencing still awaited him. The consequences were still real. The pain experienced by so many people remained. Yet something inside him was different.

As he prepared for the day ahead, he carried with him the lesson Archangel Raguel had shown him. He could not change yesterday. He could not control the outcome that awaited him. What he could control was the person he chose to become moving forward.

As he entered the courtroom later that day, he silently repeated the message that had been impressed upon his heart.

Justice is not the end of the story.

What we choose to do afterward is where healing begins.

## **Reflection**

Archangel Raguel teaches us that justice and mercy are not opposing forces. Both are necessary for healing and balance to occur. While consequences may be unavoidable, every soul still possesses the ability to learn, grow, and transform.

When life feels unfair, when relationships become strained, or when we find ourselves facing the results of difficult choices, Raguel reminds us that peace is found not in controlling outcomes, but in meeting them with honesty, accountability, compassion, and grace. Through Divine Order, healing can emerge even from life's most difficult moments.

[Back to Top](#)



## Current Events in Gemini & Cancer



June begins under the lively and curious influence of Gemini, bringing movement, communication, and a desire to explore new ideas and possibilities. After the steady pace of Taurus season, the energy begins to feel lighter, faster, and more mentally focused. Many people may notice an increased desire to connect with others, learn something new, share ideas, or gain a fresh perspective on situations that may have felt stagnant in recent months.

Gemini energy encourages flexibility and adaptability. It reminds us that growth often begins with asking questions rather than having all the answers. Conversations become important this month, as opportunities for insight, learning, and connection may arrive through unexpected encounters, discussions, or information. There is a sense that life is inviting us to remain

open-minded and willing to see things from different viewpoints.

At the same time, the rapid pace of Gemini can create mental overload if we become too scattered or distracted. With information constantly flowing from every direction, many may find themselves feeling overwhelmed by too many choices, too much stimulation, or an inability to quiet the mind. This energy asks us to stay curious without becoming consumed by external noise. The challenge is learning to balance knowledge with wisdom and communication with inner reflection.

As the month progresses, the energy gradually shifts into Cancer, bringing attention toward our emotional world, family connections, home life, and personal well-being. After the mentally active energy of Gemini, Cancer encourages us to slow down and reconnect with what truly nourishes the heart. Emotions may feel stronger, intuition may become heightened, and many people may find themselves reflecting on what provides genuine security and comfort in their lives.

Cancer energy often brings awareness to our emotional needs, relationships, and sense of belonging. Themes surrounding family, healing, self-care, nurturing, and emotional boundaries may become more noticeable throughout the second half of the month. There is a growing desire to create stability, not only in our physical surroundings but within our emotional lives as well.

The movement from Gemini into Cancer guides us from:

- Mental stimulation → Emotional awareness
- External communication → Inner reflection
- Gathering information → Trusting intuition
- Curiosity and exploration → Nurturing and healing

June reminds us that both the mind and the heart serve important purposes on our journey. While Gemini encourages us to seek understanding through knowledge and communication, Cancer teaches us that true wisdom often comes from listening to our emotions, honoring our intuition, and creating space for healing and connection.

**"Allow your mind to explore new possibilities, but let your heart guide you toward what truly feels like home."**

---

**Secrets of Healing offers Online Astrological Counseling.**

To schedule an appointment or get more information please contact [Teri Martell](#) or to learn more click here.

---

## Themes for All Zodiac Signs

### Gemini

**What It Brings:** This is your season, bringing increased visibility, confidence, motivation, and personal growth. New ideas, opportunities, and conversations may arise quickly, encouraging you to embrace change and explore new possibilities. Others may naturally be drawn to your energy and perspective. June invites you to step into your authentic self and share your voice with greater confidence.

**How to Navigate:** Stay focused on what truly matters rather than scattering your energy in too many directions. Prioritize quality over quantity and allow yourself time to process before making important decisions.

---

### Cancer

**What It Brings:** June marks the beginning of a powerful new chapter for Cancer. Emotional growth, healing, personal development, and self-discovery become major themes. You may feel more intuitive than usual and increasingly aware of what supports your peace and emotional well-being. As the month progresses, your energy begins building, bringing greater clarity about where you want to invest your time, heart, and energy.

**How to Navigate:** Honor your emotional needs without guilt. Trust your intuition and allow yourself to release what no longer aligns with the person you are becoming.

---

### Leo

**What It Brings:** A quieter and more reflective energy surrounds you this month. You may feel called to step back from constant activity and spend more time processing emotions, reviewing past experiences, or preparing for future opportunities. This period offers valuable insight into what needs healing before your next cycle of growth begins.

**How to Navigate:** Allow yourself moments of solitude and reflection. Answers may arrive when you stop pushing and start listening to your inner wisdom.

---

## Virgo

**What It Brings:** Friendships, networking, community involvement, and future goals become highlighted. You may feel inspired to connect with like-minded individuals who support your growth and share your vision for the future. Opportunities may arise through social connections and collaborative efforts.

**How to Navigate:** Remain open to collaboration and new connections. The people entering your life now may play an important role in helping you move toward your long-term goals.

---

## Libra

**What It Brings:** Career matters, leadership opportunities, and long-term ambitions may demand greater attention. You may find yourself evaluating where you are headed professionally and what success truly means to you. Recognition for past efforts may begin to emerge.

**How to Navigate:** Trust your abilities and avoid second-guessing yourself. Focus on steady progress and remember that lasting success is built one step at a time.

---

## Scorpio

**What It Brings:** Expansion, learning, spiritual growth, and new perspectives become stronger themes throughout June. You may feel drawn toward education, travel, personal development, or exploring beliefs that broaden your understanding of life. New opportunities may appear when you least expect them.

**How to Navigate:** Stay open-minded and curious. Some of your greatest growth this month may come from experiences that challenge your current way of thinking.

---

## Sagittarius

**What It Brings:** Deep emotional transformation, trust, shared resources, and personal healing come into focus. You may become more aware of where emotional attachments, fears, or unresolved issues are influencing your decisions. This month encourages profound personal growth.

**How to Navigate:** Allow yourself to be vulnerable and honest with yourself. Healing often begins when we stop avoiding what needs our attention.

---

## Capricorn

**What It Brings:** Relationships, partnerships, and important connections become major areas of focus. Whether personal or professional, interactions with others may offer valuable insight into your own growth and emotional needs. Cooperation becomes increasingly important.

**How to Navigate:** Practice patience and clear communication. Strong relationships are built through mutual understanding, respect, and honesty.

---

## Aquarius

**What It Brings:** Daily routines, work responsibilities, health, and personal organization come into focus. You may feel motivated to create greater structure and improve habits that support your overall well-being. Small adjustments made now can produce lasting benefits.

**How to Navigate:** Focus on small, sustainable improvements rather than drastic changes. Consistency will create meaningful progress over time.

---

## Pisces

**What It Brings:** Creativity, joy, romance, self-expression, and personal fulfillment become highlighted. June encourages you to reconnect with activities, people, and experiences that bring genuine happiness and inspiration. Your imagination and intuition may feel especially strong.

**How to Navigate:** Give yourself permission to enjoy life. Not every moment needs to be productive. Sometimes healing comes through creativity, laughter, and following your heart.

---

## Aries

**What It Brings:** Communication, learning, and personal connections become important themes this month. You may feel inspired to share your ideas, pursue new interests, or strengthen relationships through meaningful conversations. Home and family matters may also require attention later in the month.

**How to Navigate:** Think before acting or speaking impulsively. Focus on creating understanding and building stronger foundations within your personal life.

---

## Taurus

**What It Brings:** Themes surrounding finances, personal values, self-worth, and long-term stability come into focus this month. You may feel called to evaluate where your energy is being invested and whether your current path supports the future you wish to build. Practical matters may require thoughtful attention.

**How to Navigate:** Trust your instincts when making practical decisions. Focus on building steady foundations rather than seeking immediate results. Consistency will serve you better than rushing.

---

## Key Planetary Movements – June 2026

### June 1 – Mercury Enters Cancer

**Theme:** Emotional communication and intuitive thinking

**Brief:** Communication begins shifting from logic and facts toward feelings, intuition, and personal experiences. Conversations may become more heartfelt, and many people may find themselves reflecting on family matters, memories, and emotional needs. This energy encourages listening with both the mind and the heart.

---

### June 2 – Jupiter Enters Cancer

**Theme:** Emotional growth and building stronger foundations

**Brief:** One of the most significant astrological shifts of the year occurs as Jupiter moves into Cancer. Attention turns toward home, family, emotional well-being, security, and creating a stronger foundation for the future. Themes of nurturing, healing, protection, and personal growth become more prominent over the coming months.

---

### June 14 – New Moon in Gemini

**Theme:** New ideas and fresh perspectives

**Brief:** This New Moon brings opportunities for learning, communication, networking, and mental expansion. It is an excellent time to embrace new ideas, begin new projects, and explore possibilities that inspire curiosity and growth. Gemini energy encourages flexibility, creativity, and openness to change.

---

## June 19 – Chiron Enters Taurus

**Theme:** Healing self-worth and personal stability

**Brief:** Chiron's move into Taurus begins a long-term cycle focused on healing issues surrounding self-worth, security, finances, and our relationship with the physical world. Collective themes may include learning to value ourselves more deeply and creating healthier foundations for long-term well-being.

---

## June 21 – Sun Enters Cancer

**Theme:** Emotional connection and nurturing energy

**Brief:** Cancer season begins, bringing greater focus to home, family, emotional well-being, intuition, and personal security. The pace naturally slows, encouraging people to reconnect with what truly matters and create deeper emotional balance within their lives.

---

## June 28 – Mars Enters Gemini

**Theme:** Mental activity and forward movement

**Brief:** Mars entering Gemini increases mental energy, motivation, communication, and curiosity. Ideas may move quickly, and many people may feel inspired to pursue new interests, conversations, and opportunities. The challenge is remaining focused rather than becoming scattered.

---

## June 29 – Mercury Retrograde Begins in Cancer

**Theme:** Reflection, review, and emotional clarity

**Brief:** Mercury begins its retrograde journey in Cancer, encouraging reflection on family matters, emotional patterns, communication, and the past. This energy invites us to slow down, revisit unresolved issues, and gain greater understanding before moving forward. Misunderstandings may occur, making patience and thoughtful communication especially important.

---

## June 29 – Full Moon in Capricorn

**Theme:** Balance between responsibility and emotional needs

**Brief:** This Full Moon shines a light on responsibilities, long-term goals, career matters, and personal achievement. Capricorn encourages accountability and practical action, while Cancer season reminds us not to neglect emotional well-being. This lunation asks us to find balance between what we do and how we feel.

[Back to Top](#)